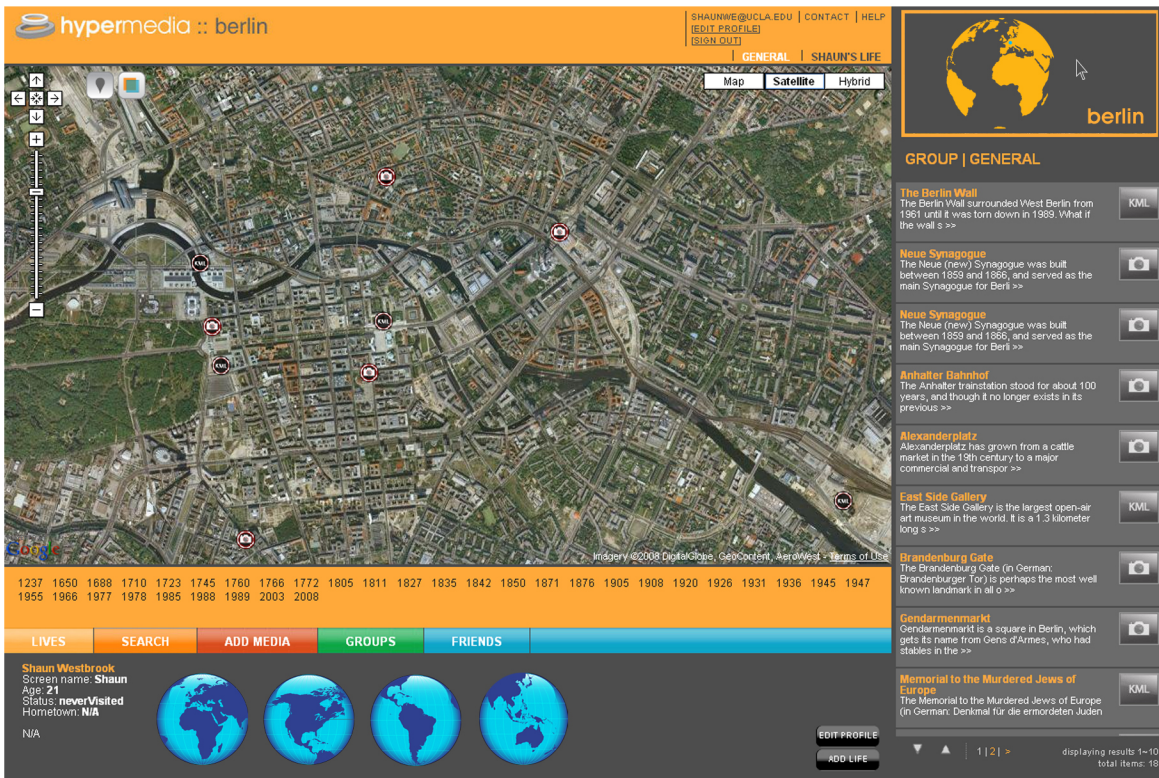




Incorporating a world map vector which rotates on a mouse scroll, replacing mini-map on main menu. Map unfolds on mouse click to two dimensional planes.



hypermedia :: berlin

SHAUNWE@UCLA.EDU | CONTACT | HELP
EDIT PROFILE | SIGN OUT

GENERAL | SHAUN'S LIFE

Map | Satellite | Hybrid

GROUP | GENERAL

The Berlin Wall
The Berlin Wall surrounded West Berlin from 1961 until it was torn down in 1989. What if the wall s >>

Neue Synagoge
The Neue (new) Synagogue was built between 1859 and 1866, and served as the main Synagogue for Berli >>

Anhalter Bahnhof
The Anhalter trainstation stood for about 100 years, and though it no longer exists in its previous >>

Alexanderplatz
Alexanderplatz has grown from a cattle market in the 19th century to a major commercial and transport >>

East Side Gallery
The East Side Gallery is the largest open-air art museum in the world. It is a 1.3 kilometer long s >>

Brandenburg Gate
The Brandenburg Gate (in German: Brandenburger Tor) is perhaps the most well known landmark in all o >>

Gendarmenmarkt
Gendarmenmarkt is a square in Berlin, which gets its name from Gens of Arms, who had stables in the >>

Memorial to the Murdered Jews of Europe
The Memorial to the Murdered Jews of Europe (in German: Denkmal für die ermordeten Juden

1237 1650 1688 1710 1723 1745 1760 1766 1772 1805 1811 1827 1835 1842 1850 1871 1876 1905 1908 1920 1926 1931 1936 1945 1947 1955 1966 1977 1978 1985 1988 1989 2003 2008

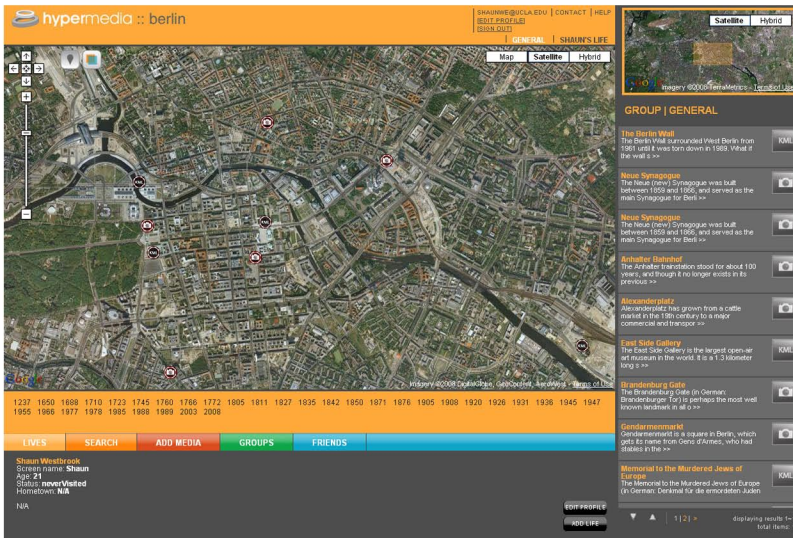
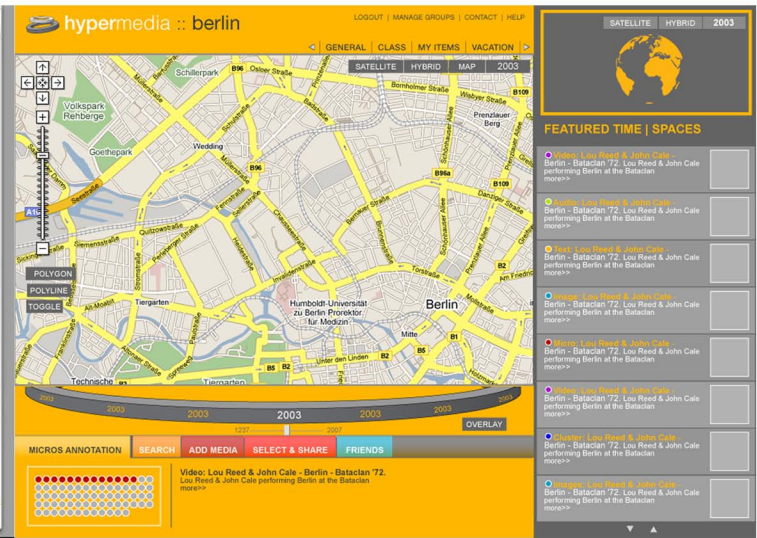
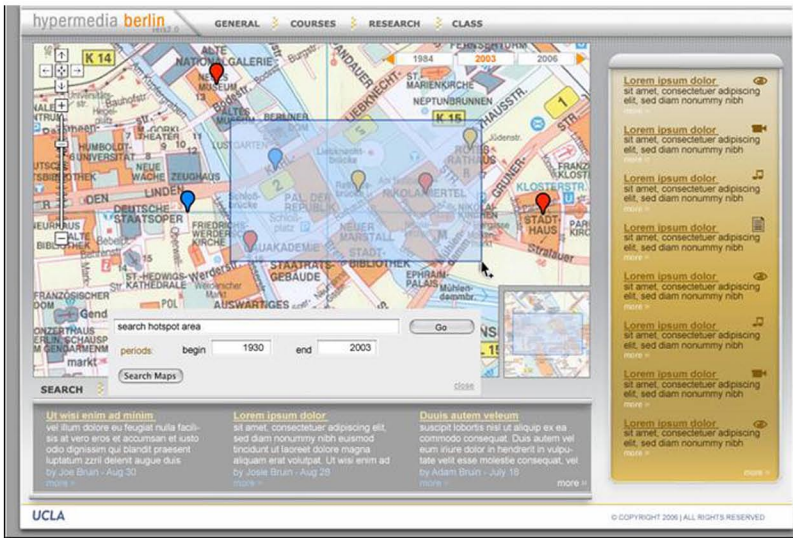
LIVES | SEARCH | ADD MEDIA | GROUPS | FRIENDS

Shaun Westbrook
Screen name: Shaun
Age: 21
Status: never Visited
Hometown: N/A

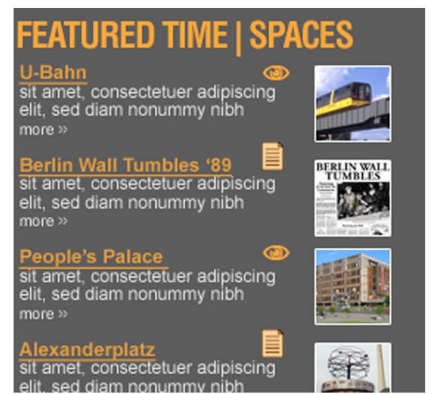
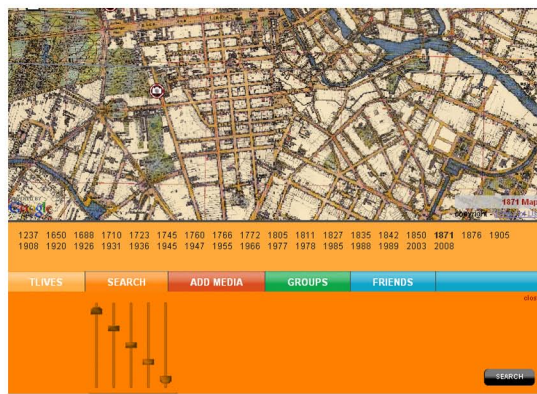
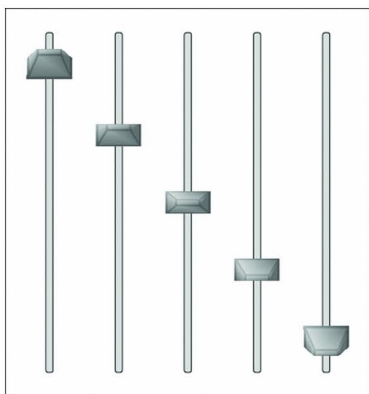
EDIT PROFILE
ADD LIFE

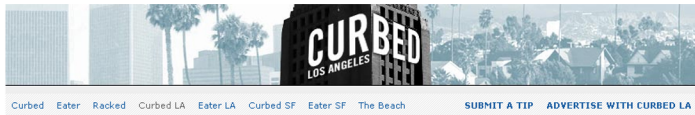
displaying results 1-10
total items: 18

Navigate menus on top right corner (mini-map), partial world views on bottom. World views can visualize other hypercities the user has visited.



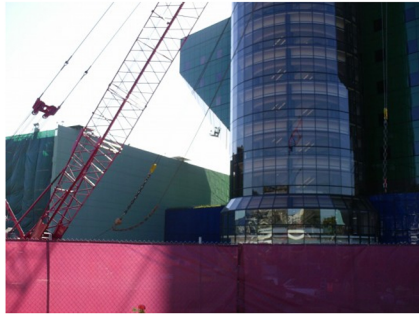
The evolution of the interface and inteli-list. Perhaps the inteli-list (featured time | spaces) could still incorporate thumbnail images to preview each micro annotation. The search tab or coring tab could include the new time slider for specific groups of dates. This way, it will not crowd the interface on the main page. (The search tab could be highlighted by default on the startup page) The main time-slider needs to be the ring or misc date slider, this needs to grab the main attention of the user. The secondary time-slider could be incorporated on the bottom tab.





MONDAY, MARCH 3, 2008

Construction Watch: Pacific Design Center's RedBuilding in WeHo



There's a flurry of activity at the Pacific Design Center, the office tower/mega-showroom for furniture design in West Hollywood. Cesar Pelli's RedBuilding—the Return of the Jedi in his PDC structure trilogy—has its tarps and crane up (all red, of course). Construction workers are scurrying around as well. WeHo News reports all these workers are union folk and that the RedBuilding—expected to open next year—will create 1,933 new construction jobs.



More photos in Curbed LA

ABOUT CURBED LA

From the studio lots to the downtown lofts. From the beachfront bungalows to the canyon views. From the south bay to the valley, from the westside to the eastside—Curbed LA covers our sense of place, and the neighborhoods we call home. [Read more about Curbed LA...](#)

Full Content Feed

ARCHIVES

Select a category...

SEARCH CURBED LA

Search

CREDITS

- Los Angeles Editor [Dakota Smith](#)
- Editors [Josh Williams](#) [Marissa Gluck](#)
- Contributing Editor [Eric Betteille](#)
- Publisher/GM [Kyle Crafton](#)
- Head of Technology [Eliot Shepard](#)

Santa Monica's Homeless May Have to Give Up Their Seats



A few weeks ago, [our post about the new benches installed the Wilshire/Vermont station](#), drew a grumbling "hmm, slow day? why you writing about benches" comment. Exhibit A on why benches in cities are never just benches: Santa Monica is looking to ban pan-handling from the benches and seats along the Third Street Promenade. (It's currently not illegal to pan-handle on the Third Street Promenade although there are some exceptions concerning soliciting money from groups of people, i.e., people waiting in movie lines.) The Lookout News' Jorge Casuso reports that City Attorney Marsha Moutrie says there are about **100 benches and seats along the three-block stretch of the Promenade**, but the homeless are monopolizing these seats. Via the LN: "The limited seating to the Promenade is occupied for long periods of time by persons soliciting donations," Moutrie said. "This is not directed at the homeless. **It's directed at an activity that monopolizes seating.**" Meanwhile, no response yet on this measure from [LA's Homeless Blog](#). [Council Moves to Ban Panhandling from Promenade Seating](#) [Lookout News]

Filed under [Santa Monica & Venice](#), [Homeless](#), [Santa Monica](#), [Third Street Promenade](#)
[Email this post to a friend](#)
[Comments feed for this post](#)

Comments (5 extant)

Of course I feel bad for homeless people, but I understand why the city council is trying to ban their "monopolizing" of the benches on the Promenade.... every time I go there I am constantly accosted by beggars to a point where it makes me want to shop elsewhere. If you want to sit somewhere, usually every available seat is occupied by a homeless person. It amazes me that tourists around the world don't comment on it too.

Comment #1, left at 03/03/08 12:09 PM.

As a SaMo resident for 12 years, I've seen the homeless problem go from horrible to unrecognizable. In a way that will be a disaster. I hope

ABOUT CURBED LA

From the studio lots to the downtown lofts. From the beachfront bungalows to the canyon views. From the south bay to the valley, from the westside to the eastside—Curbed LA covers our sense of place, and the neighborhoods we call home. [Read more about Curbed LA...](#)

Full Content Feed

ARCHIVES

Select a category...

SEARCH CURBED LA

Search

CREDITS

- Los Angeles Editor [Dakota Smith](#)
- Editors [Josh Williams](#) [Marissa Gluck](#)
- Contributing Editor [Eric Betteille](#)
- Publisher/GM [Kyle Crafton](#)
- Head of Technology [Eliot Shepard](#)
- Logo [Khoi Uong](#)

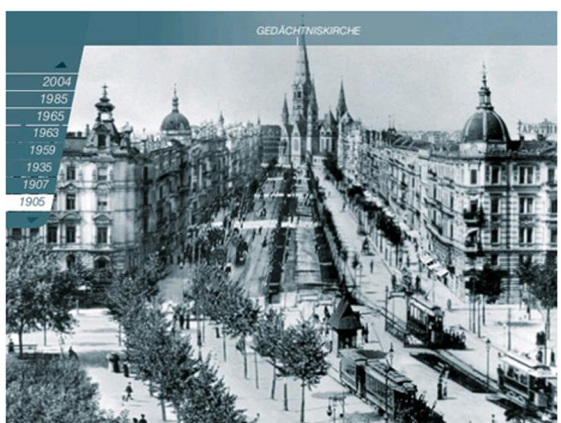
OTHER CURBED SITES

- Los Angeles [Eater LA](#)
- San Francisco [Curbed SF](#)

Following the curbed articles, having the ability to make comments creates a sense of community. Historical annotations could have hyperlinks to current events by the hour. Every news spot could have a location and time tag.

Pictures of "timescope"

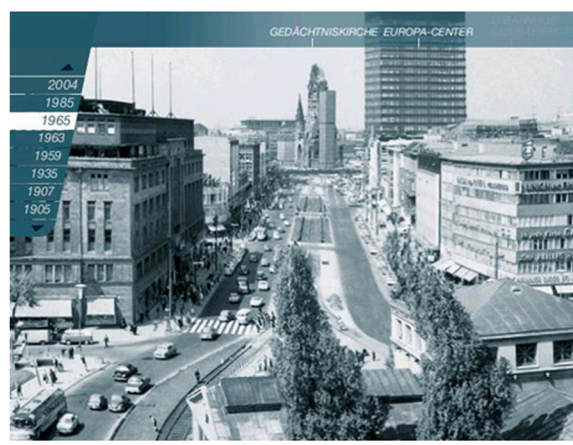
←back to project description



View of Tauentzienstraße dated 1905

Pictures of "timescope"

←back to project description



View of Tauentzienstraße dated 1965

ART + COM and the incorporation of images and location, past and present. Geo-reference each still image of a video sequence and overlay over 3D models.